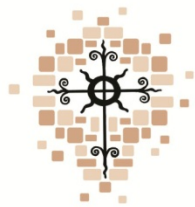




THE  
CORNERSTONE PROJECT  
*Answering Christ's Call*

# Welcome to the Cornerstone Project update!



THE  
CORNERSTONE PROJECT  
*Answering Christ's Call*

# Prayer for God's Blessings on The Cornerstone Project

Lord God, we offer You thanks and praise  
for all that You have given us through Your Holy Church.

We ask now for an outpouring of Your grace  
upon this parish and our labors.

You tell us in Scripture, "If the Lord does not build the house,  
its builders labor in vain."

We ask You, Lord, if it be Your will, to build this house.

May it deepen our faith, bring home the lost  
and educate and evangelize our youth.

Bless our building campaign and grant it generous response.

May it unfold with kindness and loving accord

May our efforts be pleasing and bring You delight.

Purify our intentions in the furnace of Your love.

Give us joyful and sacrificial hearts.

And in all of our efforts let us seek only this:

The conversion of souls and the glory of your name.

We ask this through Your Son,  
Jesus Christ who lives and reigns forever.

Amen.

# Tonight's Presentation

- ❖ Introduction of Building Expansion Committee Members
- ❖ St. Charles Parish History from Michael Berendes
- ❖ Comments from Fr. Ken
- ❖ Current Architectural Plans for St. Charles Parish
- ❖ Questions
- ❖ Blessing by Fr. Ken



THE  
CORNERSTONE PROJECT  
*Answering Christ's Call*

# Building Expansion Committee

Michael Berendes

Terry Dittrich

Patrick Flannick

Andrew Formella

Rebecca Formella

Alex Lemperger

Mary McGinn

Jacob Notch

Bill Pedersen

Gene Widenski

Kurt Wieland

Fr. Ken Omernick, Fr. Patrick Behling, Marge Beck and Mike Cattani



THE  
CORNERSTONE PROJECT  
*Answering Christ's Call*

# St. Charles steeped in history!



1863  
St. Charles  
Catholic  
Community  
Begins



1908  
New Church on  
Hill Street in  
Hartland



1956  
Construction on the  
New Church on  
Circle Drive in  
Hartland Begins



1959  
School Opens



1991  
Church & School  
Expansion and  
Remodeling Project  
Starts



2002  
Church & School  
Expansion and  
Remodeling Project  
Starts



2016  
Start of  
Capital Campaign



*Laying of Cornerstone Summer 1907-  
Archbishop Messmer:*



The beginning ...





Through the  
years ...



# A growing Lake Country community



# The future of the Archdiocese of Milwaukee



# An active and faith filled St. Charles Parish and School!





THE  
CORNERSTONE PROJECT  
*Answering Christ's Call*

Why are we building  
a 1,250 seat  
traditional church?

# St. Cecilia



# St. Pius X



# St. Raphael





THE  
CORNERSTONE PROJECT  
*Answering Christ's Call*

# Exterior of New Church



THE  
CORNERSTONE PROJECT  
*Answering Christ's Call*

# Birdseye View from Northwest



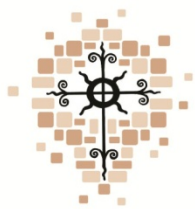


THE  
CORNERSTONE PROJECT  
*Answering Christ's Call*

# View of Entry from the West



ZIMMERMAN  
ARCHITECTURAL



THE  
CORNERSTONE PROJECT  
*Answering Christ's Call*

# Birdseye View from Southeast



zimmer  
ARCHITECTURAL ST

CHARLES  
St  
The Catholic Community of Harland



THE  
CORNERSTONE PROJECT  
*Answering Christ's Call*

# View of Chapel from the East





THE  
CORNERSTONE PROJECT  
*Answering Christ's Call*

# Interior of New Church



THE  
CORNERSTONE PROJECT  
*Answering Christ's Call*

# View of Nave from West Entrance



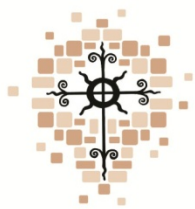
zimmerman  
ARCHITECTURE



THE  
CORNERSTONE PROJECT  
*Answering Christ's Call*

# View of Sanctuary from North



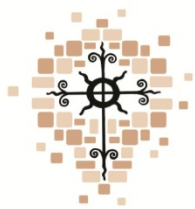


THE  
CORNERSTONE PROJECT  
*Answering Christ's Call*

# View of Nave from Altar



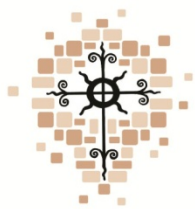
zimmermann  
ARCHITECTURAL STUDIO



THE  
CORNERSTONE PROJECT  
*Answering Christ's Call*

# View from Choir Loft





THE  
CORNERSTONE PROJECT  
*Answering Christ's Call*

# View of Adoration Chapel



zimmer  
ARCHITECTURAL ST



THE  
CORNERSTONE PROJECT  
*Answering Christ's Call*

# View of Narthex



zimmerman  
ARCHITECTURAL STUDIO



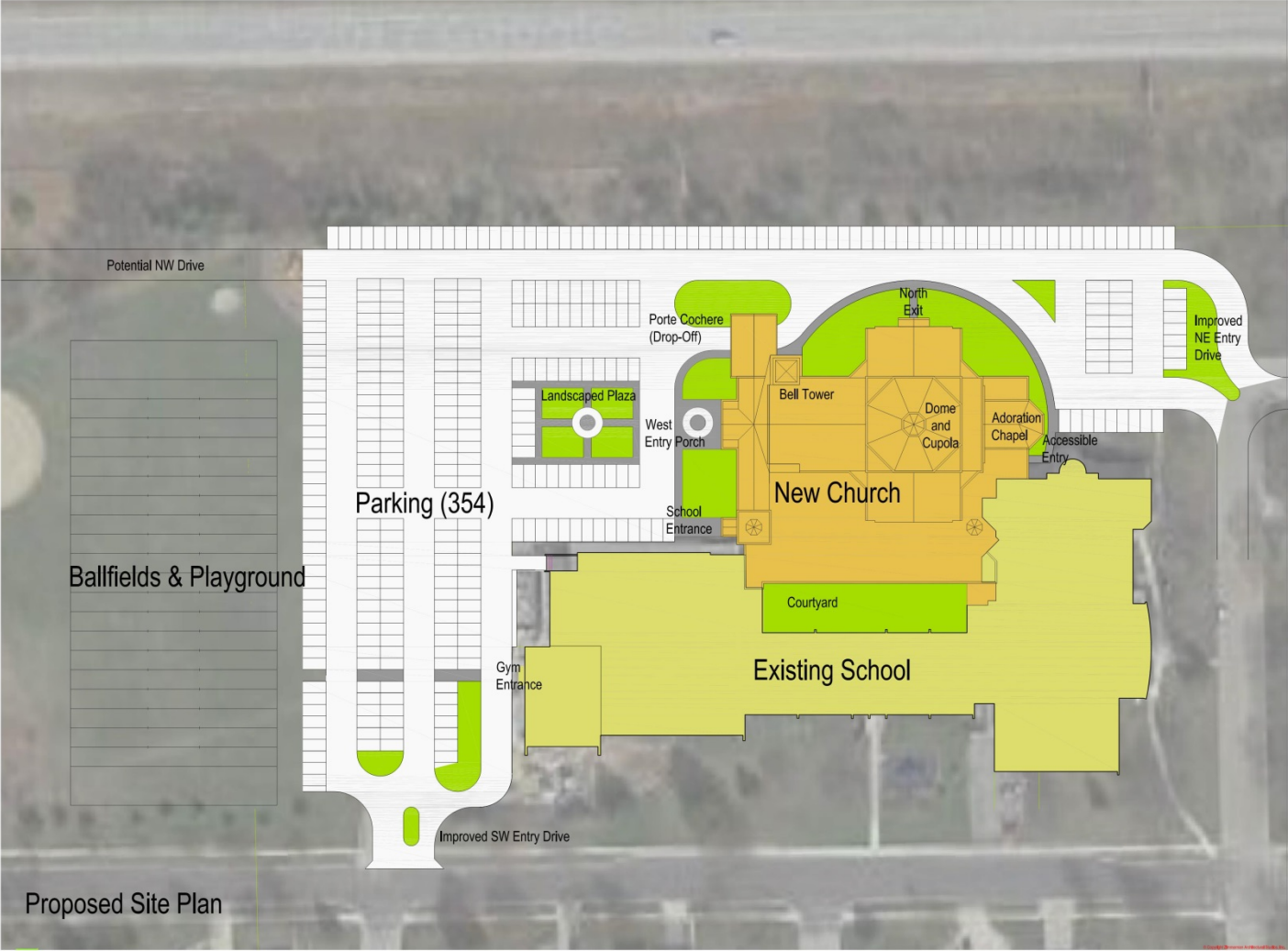
THE  
CORNERSTONE PROJECT  
*Answering Christ's Call*

# New Church Plans



THE  
CORNERSTONE PROJECT  
*Answering Christ's Call*

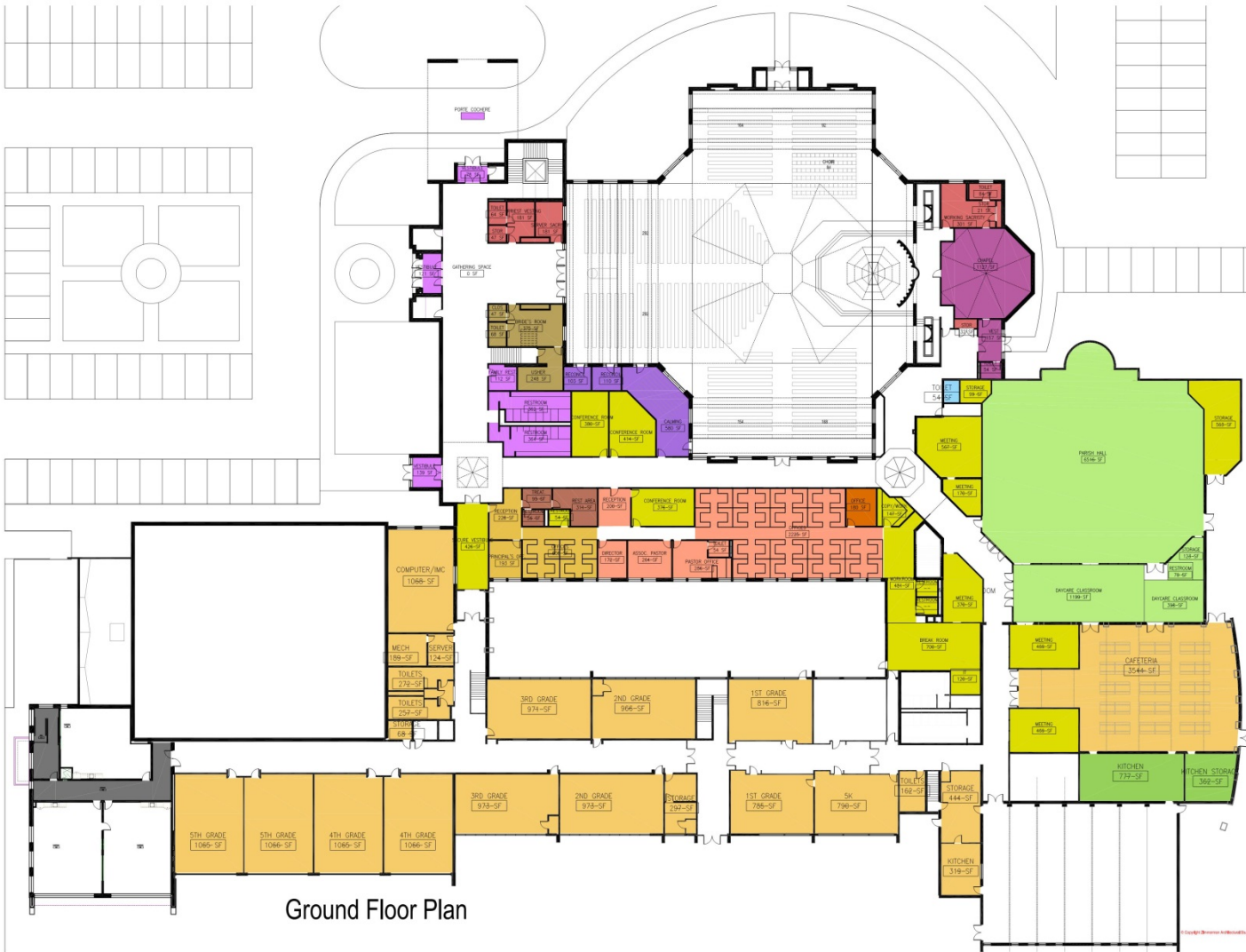
# Site Plan



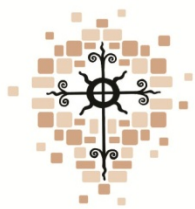


THE  
CORNERSTONE PROJECT  
*Answering Christ's Call*

# Ground Floor Plan

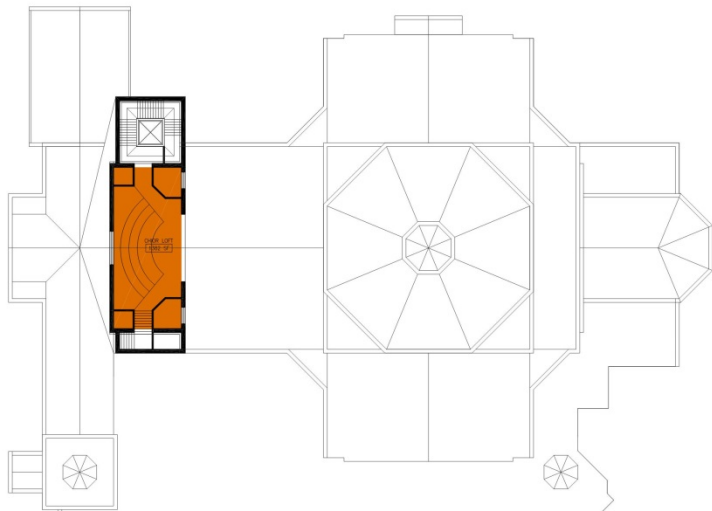


Ground Floor Plan



THE  
CORNERSTONE PROJECT  
*Answering Christ's Call*

# Basement Floor Plan



Loft Floor Plan



Basement Floor Plan

zimmerman  
architectural studios inc.



Project:  
St. Charles  
Church Addition

Location:  
313 Circle Drive  
Hartland, WI 53031  
Key Plan

Sheet:  
Loft Floor  
Basement

Scale:

Revisions/Issued For

No. Date Description

Date:

05/17/18

Project No.:

160088.01

Sheet No.:

A-2





THE  
CORNERSTONE PROJECT  
*Answering Christ's Call*

# Questions?



THE  
CORNERSTONE PROJECT  
*Answering Christ's Call*

Thank you  
for coming and for your  
continued support of the  
Cornerstone Project!